



The

# Checkpoint

Official Publication of the Arrowhead Sports Car Club

Visit us on the World Wide Web at [arrowheadsc.org](http://arrowheadsc.org)

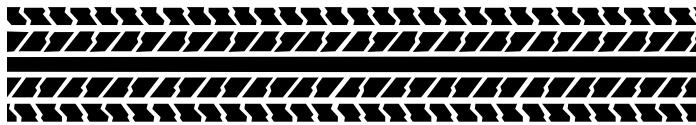
Volume 42

September 2001

Number 8

## Skid Marks

----by Bill Taylor



### A Few More Observations

**Police roadblocks** can give you an opportunity to see the countryside better. At one point in our trek to Arizona, it took us about an hour and a half to go approximately 4 miles. We could probably have established life-long friendships with those in the hundreds of vehicles around us.

Don't know precisely what caused the police to block I-40 just west of Albuquerque. I understand that an off-duty officer was killed. Regardless, I have never seen so many state, county and local police vehicles in one place.

**Things better not done.** Top of my current list is that I did *not* take the scenic route to Scottsdale. That would have meant going over the Rockies at Raton Pass and traversing the upper half of New Mexico. Considering how little power the U-Haul had, we would probably still be struggling uphill somewhere outside of Santa Fe.

Generally, in Minnesota, a car more than twenty years old will have collector plates. Not because they are historically significant, rare or examples of outstanding design. This is a tribute to the vehicles' ability to withstand two decades of salt corrosion (a.k.a., Minnesota Lace.) How else do you explain a Gremlin with collector plates? In Kansas and points

south and west, the same cars are used mostly for work and fishing. Most often left with the doors unlocked and the windows rolled partly down. Unfortunately, most are too ugly to steal.



### ASCC Winter Rallye Series

Keep your eye on this space. We will soon be having the annual organizational meeting for the 2001-02 season. If you have any suggestions for the general regulations or other aspects of the series, please sound off! Contact Tim Winker through the ASCC web site ([www.arrowheadsc.org](http://www.arrowheadsc.org)) or your humble editor (YHE) at [wastaylor@earthlink.net](mailto:wastaylor@earthlink.net). Conventional mail and phone calls also work

### Wings and Wheels

Spent this last Saturday at the annual Wings&Wheels celebration at Ocoea, Wisconsin. This community event centers around Motor Books International's annual house cleaning sale. I'm chagrined to admit that this was my first visit. Though was evidently down, drizzly weather and competing events such as the Great River Road Rally were the main culprits, I am impressed--also a few bucks lighter after helping MBI with their chore. Lots of cars to drool on. My favorite was either a Sierra Cosworth or a rebadged Merkur XR-4ti.

More pictures are elsewhere in this issue.



--Nuff Sed

# Arrowhead Sports Car Club

# Newsletter Staff

## Officers

### President

5554 Maple Grove Rd.  
Hermantown, MN 55811

### Jon Anderson

H 729-9390

### Vice Pres./ Publicity

7675 Bear Trap Junc. Rd.  
Saginaw, MN 55779-9672

### Tim Winker

H 729-0821

### Secretary

423 S 19<sup>th</sup> Ave. E.  
Duluth MN 55812-2028

### Bill Taylor

H 728-2980  
W 727-8723

### Treasurer

423 S 19<sup>th</sup> Ave. E.  
Duluth MN 55812-2028

### Char Taylor

H 728-2980  
W 723-2870

### Competition /Membership

7675 Bear Trap Junc. Rd.  
Saginaw, MN 55779-9672

### Diane Sargent

H 729-0821  
W 727-6864

---

Periodicals Postage paid at Duluth MN 55801  
*The Checkpoint* is the official newsletter of the Arrowhead Sports Car Club, Inc. Opinions expressed herein are not necessarily those of the ASCC, its officers or its members, nor any Checkpoint advertisers. Articles may be edited. Non-original material will be noted as such.

*The Checkpoint* is published monthly except January from 423 S. 19<sup>th</sup> Ave. East, Duluth, MN 55812-2028.

Annual subscriptions are \$11.00 and are included in ASCC membership. Single-issue price is \$1.00 and is included in entry fees for ASCC events. Make checks payable to ASCC, c/o Treasurer.

## Editor

### Bill Taylor

423 S 19<sup>th</sup> Ave. E. H 728-2980  
Duluth MN 55812-2028 W 727-8723  
E-mail: [editor@arrowheadsc.org](mailto:editor@arrowheadsc.org)

## Workers

None this month.

## Contributors

Jerry Winker (Photos)  
Tim Winker (Photos)  
Jon Anderson

## Submissions

Submissions to *The Checkpoint* may be typed, handwritten, composed on diskette or transmitted by e-mail. All submissions should be sent to the editor at the above address

Computer disks with text should be in an IBM compatible format. If material is submitted as an attachment to an e-mail message, notify the editor before submitting. No unknown e-mail attachments will be opened. Deadline for submission is the last Thursday of the month for the following month's issue.

Articles, photographs, drawings and paste-up work submitted to this publication earn ASCC Continental Cup worker points.

*The Checkpoint*  
(USPS) 006-510

### **Address Correction Service Requested**

Postmaster, send address corrections to:

*The Checkpoint*  
423 S. 19<sup>th</sup> Ave. East  
Duluth, MN 55812

# Images of *Wings & Wheels 2001*



*Several of the MG's on exhibit used a modified improvisational, dynamic impairment parking brake.*



*This Saab 96 actually won the RAC Rally and subsequently driven by Tim Winker and survived. It (the Saab) will be returning to Great Britain this year as part of a retrospective.*



## **Moving Sale** (pun intended)

**Tom Schramm** is moving and he wants to unload a few things. Take a look.

**Call 952-937-2337 for information**

### **Vehicles**

Austin Mini Moke  
Australian Mini Moke  
Datsun 2000 Roadster  
1974 MGB Roadster  
Bugeye Sprites  
BMW Isetta  
Moretti Coupe  
NSU Sport Prinz  
1971 Austin 1275 Cooper S Mk3  
Austin & Morris Minis  
Austin Cooper project car  
Austin Cooper S body shell (ex-racer)  
1970 Lotus Europa project car  
Austin Mini Van, new paint & interior  
Austin Mini vintage racer  
1982 Austin Mini 1000 - low miles  
1971 Jag XJ6 for parts or restoration

### **Parts & Equipment**

Panasport wheels for most cars  
Lotus Europa Renault engine  
Mini 1000 engines & assorted mini parts  
BMW 2002ti engine & trans  
MGB engine